

AIRFIX
CONSTRUCTION KIT

SCALE MODEL MOTOR CYCLE CONSTRUCTION KIT

B.S.A. 250cc. STAR C15.

Behind every B.S.A. stands more than a hundred years of precision engineering, the Birmingham Small Arms Company which now includes B.S.A., Ariel and Triumph motor cycles having been founded in the middle of the last century.

Undoubtedly participation in motorcycle sport results in greater reliability and in recent years B.S.A.'s success in scrambles and in the World Moto-Cross championships has led to the development of a superb range of single cylinder models. Competing in world-class competition riders like Jeff Smith and John Banks have proved beyond doubt the excellence of B.S.A. designs and the valuable lessons learned in the preparation of these competition mounts have been incorporated in standard production models.

The 250 Star, model C15, which is the subject of this kit was in production from 1959 until 1964 and was extremely popular, with many fine features including unit construction of the engine and gearbox, Hydraulically damped suspension front and rear, powerful brakes and accurate steering making it a particularly pleasant lightweight to ride. For those wanting a "250" with the feel of a "350", a Sports Star was produced with a high compression piston, special cams and other features to give the required performance. Competition models were also built, the C15T for trials and the C15S for scrambles.

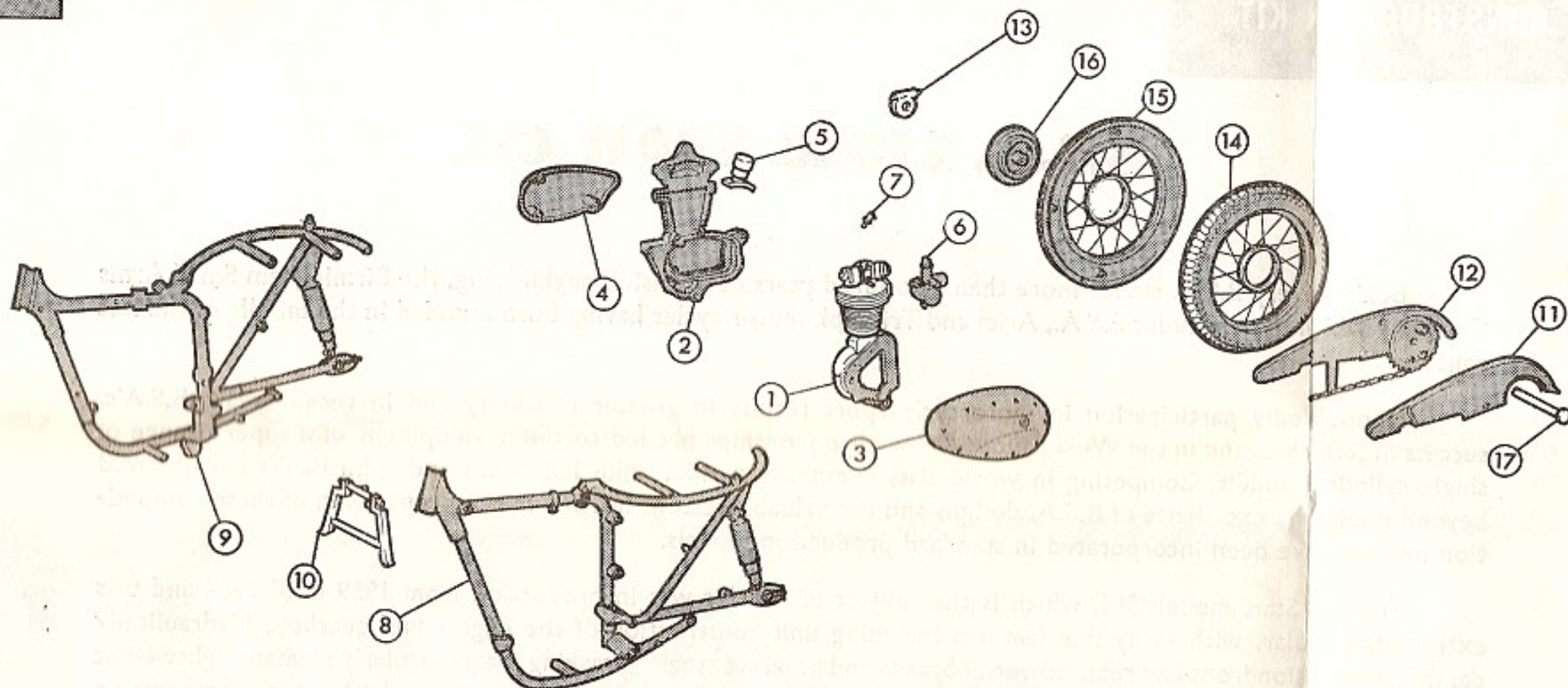
The C15 was powered by a 249 cc. (67 x 70 mm.) single cylinder four-stroke engine with a die-cast light alloy head and fully enclosed valve gear. The carburettor was an Amal Monobloc type with twist grip throttle control and enclosed air cleaner. Transmission was a B.S.A. 4-speed gearbox in unit with the engine and optional gear ratios were available.

INSTRUCTIONS

PAINT ALL DETAILS AND LET DRY BEFORE ASSEMBLING (SEE SECTION 4)
N.B. FOR PAINTING USE "AIRFIX" PAINTS, FOR FIXING USE "AIRFIX" POLYSTYRENE CEMENT

1

ENGINE, FRAME & WHEEL ASSEMBLY



It is recommended that instructions and exploded views are studied and assembly practised before cementing parts together. Some parts are best painted before assembly. Parts should be as drawn and any moulded tabs adhering to parts removed. All parts are numbered. Use of tweezers for assembly of small parts is recommended.

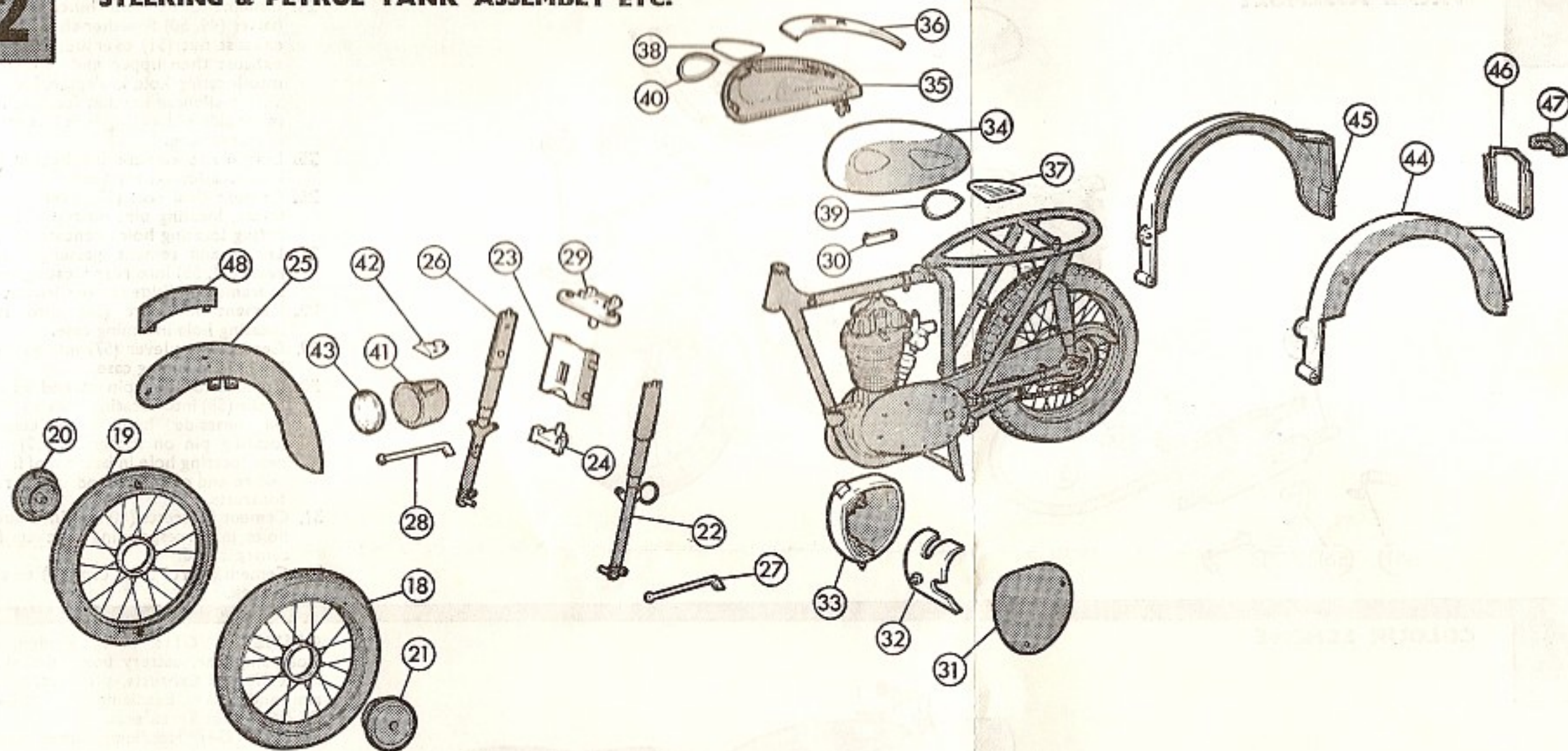
1. Locate and cement engine halves (1, 2) together.
2. Locate and cement primary chain case (3) and timing case (4) to near and offside of engine.
3. Locate and cement locating tab on base of distributor (5) into slot in top of sump.

4. Cement locating tab on carburettor (6) into slot in rear of engine.
5. Cement sparking plug (7) into locating hole in nearside top of engine.
6. Locate and cement main frame halves (8, 9) together, at same time locating and cementing engine into frame. Spring, DO NOT CEMENT, pivot pins on centre stand (10) into pivot holes in bottom bracket on main frame.
7. Cement outer (11) and inner (12) chain assembly halves together then locate and cement forward end of chain case behind primary chain case, locating pin, into

locating hole in bracket on horizontal nearside rear member of main frame, locating pin on rear sprocket, fitting into locating hole in hub.

8. Locate and cement speed drive (13) onto boss on rear inner side of offside main frame.
9. Cement rear wheel halves (14, 15) together. Place hub disc (16) into offside of wheel, DO NOT CEMENT, spring into position between rear of main frame from nearside then insert rear wheel spindle (17) through hub discs and cement into speed drive. keep cement clear of wheel.

STEERING & PETROL TANK ASSEMBLY ETC.

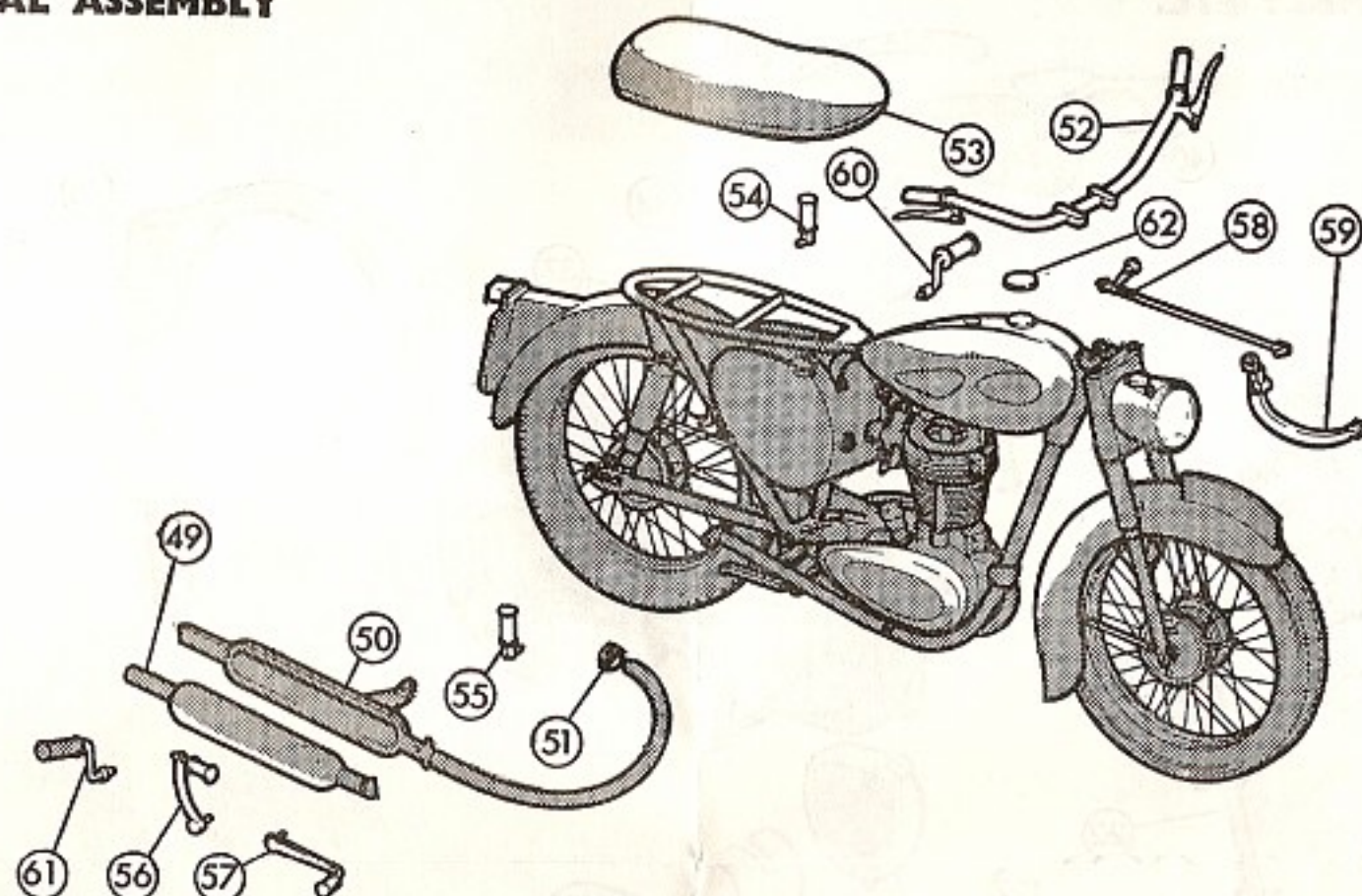


10. Cement front wheel halves (18, 19) together. Cement front hub disc (20) into nearside of wheel, set assembly aside to dry.
11. Locate and cement front brake plate (21) onto axle on nearside fork leg (22) then cement locating pin on nearside of headlamp mounting (23) into locating holes in top of forks.
12. Locate and cement lower yoke (24) into rear of headlamp mounting.
13. Cement nearside brackets on front mudguard (25) onto inner locating pins on nearside fork leg. Locate DO NOT CEMENT, front brake disc into nearside of front wheel then cement offside fork leg (26) to headlamp mounting and axle at bottom of leg NOT CEMENTED but into centre of hub disc, locating pins on inner side of leg cemented into offside brackets on front mudguard. NOTE: locating holes in top of mudguard forward.
14. Cement tabs on end of front mudguard stays (27, 28)

- into inner sides of mudguard and locating pins on opposite ends of stays into locating holes in brackets at bottom rear of forks.
15. Place, DO NOT CEMENT, pivot pin on top of lower yoke into bottom hole in steering head on main frame, then locate and cement top yoke (29) to top of forks, pivot pin beneath yoke NOT CEMENTED but into top of steering head.
16. Locate and cement engine stay (30) to engine and to frame.
17. Cement locating pins on battery case (31) into locating holes in rear of main frame then cement air filter cover (32) to inside face and front of battery case, cut-outs in air filter fitting over main frame and carburettor. Finally cement locating pins on oil tank (33) into locating holes in main frame to side of air filter.
18. Cement locating pins on near (34) and offside (35) tank sides into locating holes in top of frame then with filler

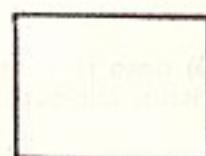
- cap forward cement tank top (36) onto ribs on inner tank sides, ribs beneath tank top fitting cut-outs in ribs on tank sides.
19. Cement knee grips (37, 38) over locations on tank sides. Apply B.S.A. motif transfer (see-section 4) to centre of recesses on tank sides then cement transparent motif panels (39, 40) into recesses.
20. Cement tab on rear of headlamp (41) into slot in headlamp mounting, cement headlamp top (42) to top of headlamp and headlamp transparency (43) in headlamp front.
21. Cement mudguard halves (44, 45) together then locate and cement between rear of frame.
22. Cement ribs on rear number plate (46) to back of rear mudguard, then cement number plate light transparency (47) to number plate.
23. Cement tabs on front number plate (48) into slots in front mudguard.

FINAL ASSEMBLY



24. Cement outer and inner exhaust halves (49, 50) together then cement exhaust nut (51) over upper end of exhaust then upper end of exhaust into locating hole in engine, locating pin on silencer bracket locating into inner side of locating hole at bottom of main frame.
25. Locate and cement handlebars (52) into location on top yoke.
26. Cement dual seat (53) over rear of frame, locating pins on top of frame fitting locating holes beneath seat.
27. Locate and cement passenger foot rests (54, 55) into rear locating holes in frame on offside above silencer.
28. Cement kickstart (56) into rear locating hole in timing case.
29. Cement gear lever (57) into remaining hole in timing case.
30. Cement locating pin at end of rod brake (58) into locating hole in bush on nearside hub, then cement locating pin on footbrake (59) into rear locating hole in bottom of frame and to end of brake rod under rear footrests.
31. Cement footrests (60, 61) into outer holes in corresponding brackets for centre stand.
32. Cement petrol filler cap (62) to top of tank.

COLOUR SCHEME



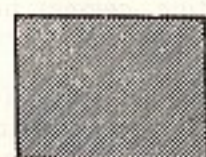
SILVER G8



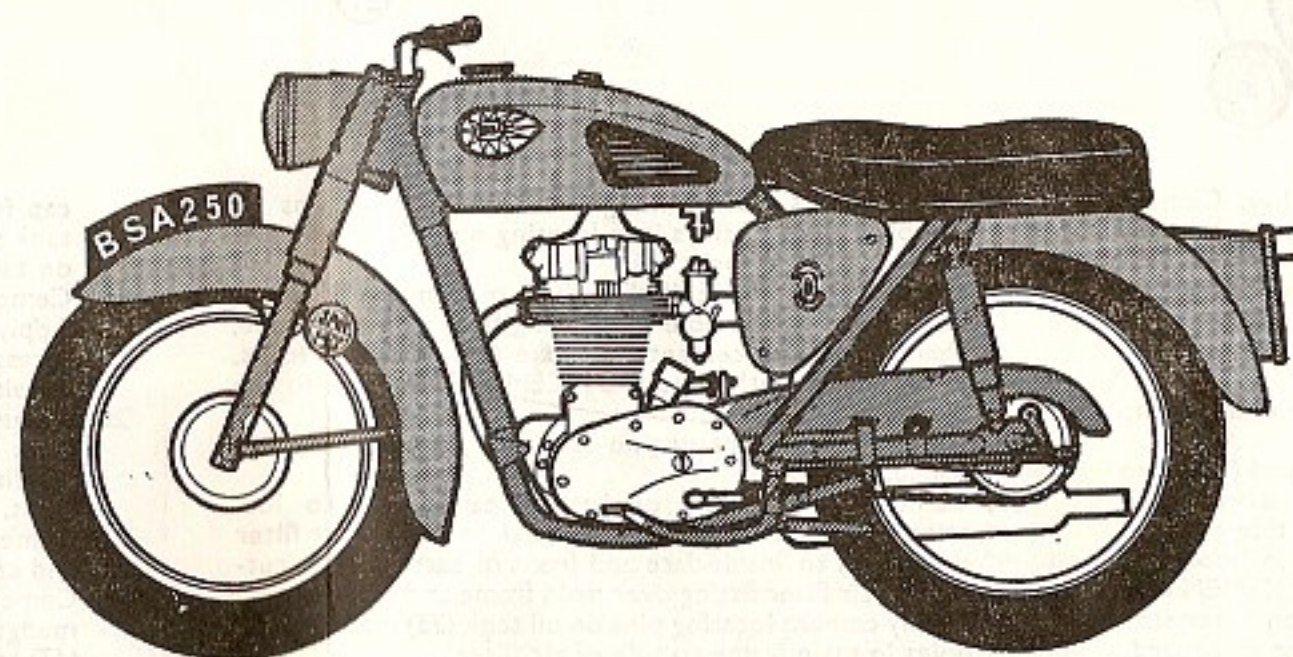
CRIMSON G11



BLACK M6



BLACK G4



CRIMSON G11: Tank, mudguards, front and rear, battery box, oil tank.
SILVER G8: Exhausts, silencers, wheel rims and spokes, headlamp rim, engine.
BLACK M6: Tyres, seat.
BLACK G4: Headlamp, front forks, frame.
APPLY TRANSFERS. First cut the sheet into the appropriate subjects. Then dip each into warm water for a few minutes, slide transfer off backing into position as indicated on the illustration (2 already applied). Number plates to front and rear plates. B.S.A. insignia to side of battery case. B.S.A. insignia with words "oil level" to side of oil tank. Licence to licence plate.

The AIRFIX Range includes over 300 Constant Scale Kits and among them are Aircraft, Modern and Veteran Cars, Warships and Classic Ships, Fighting Vehicles, Historical Figures, Rolling Stock and Trackside Series, 00 figures and Museum Models. AIRFIX also produce **MotorAce** Home Car Electric Racing Sets and Accessories, *New Artist* Painting by Numbers, **BETTA BILDA** Building Sets and a wide range of Toys and for the modeller, publishes Airfix Magazine. For full details of each range see separate catalogues.



TO

.....

.....

.....

.....

Address above label to yourself using block letters

In case of complaint fill in details and return slip to:

**AIRFIX PRODUCTS LTD. (DEPT. C)
HALDANE PLACE, LONDON, S.W.18**

NAME OF
CONSTRUCTION KIT

MY COMPLAINT IS.....

.....

.....

PART No

.....

DATE.....