

Shaun the Sheep™



Shaun, Timmy,
Bitzer and Tractor

Assembly & Painting Instructions

Shaun, Timmy, Bitzer and Tractor

The Farmer goes about his daily business completely unaware of the escapades of his animals. This is a superb model of his tractor, with Bitzer keeping a watchful eye on Shaun and Timmy.

Study drawings and practice assembly before cementing parts together. Carefully scrape plating and paint from cementing surfaces.

All parts are numbered. Paint small parts before assembly. Use decals in conjunction with box artwork and these instructions.

For children over 8 years of age only. For use under adult supervision. Not suitable for children under 36 months of age due to the presence of small detachable parts.



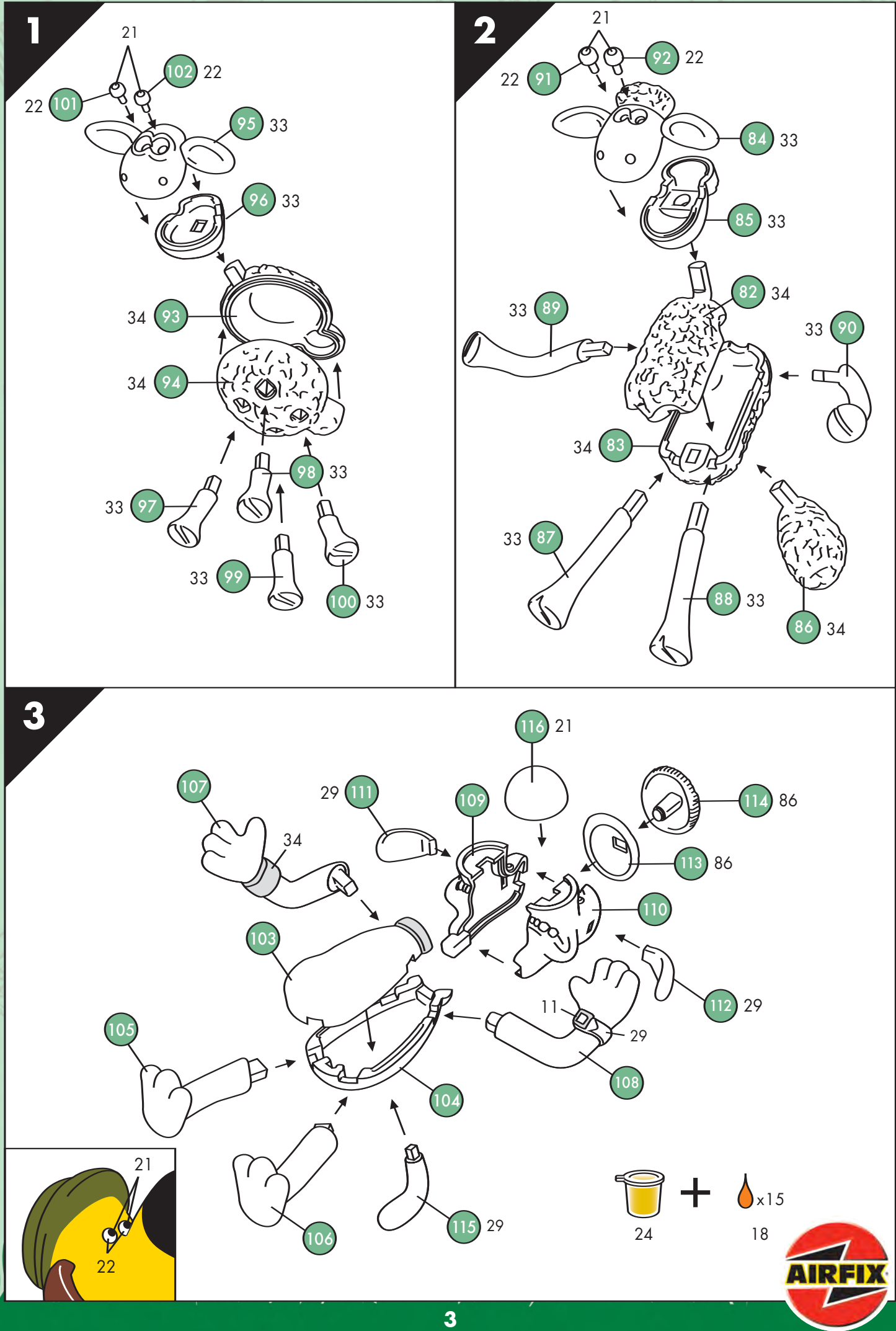
Assembly icons

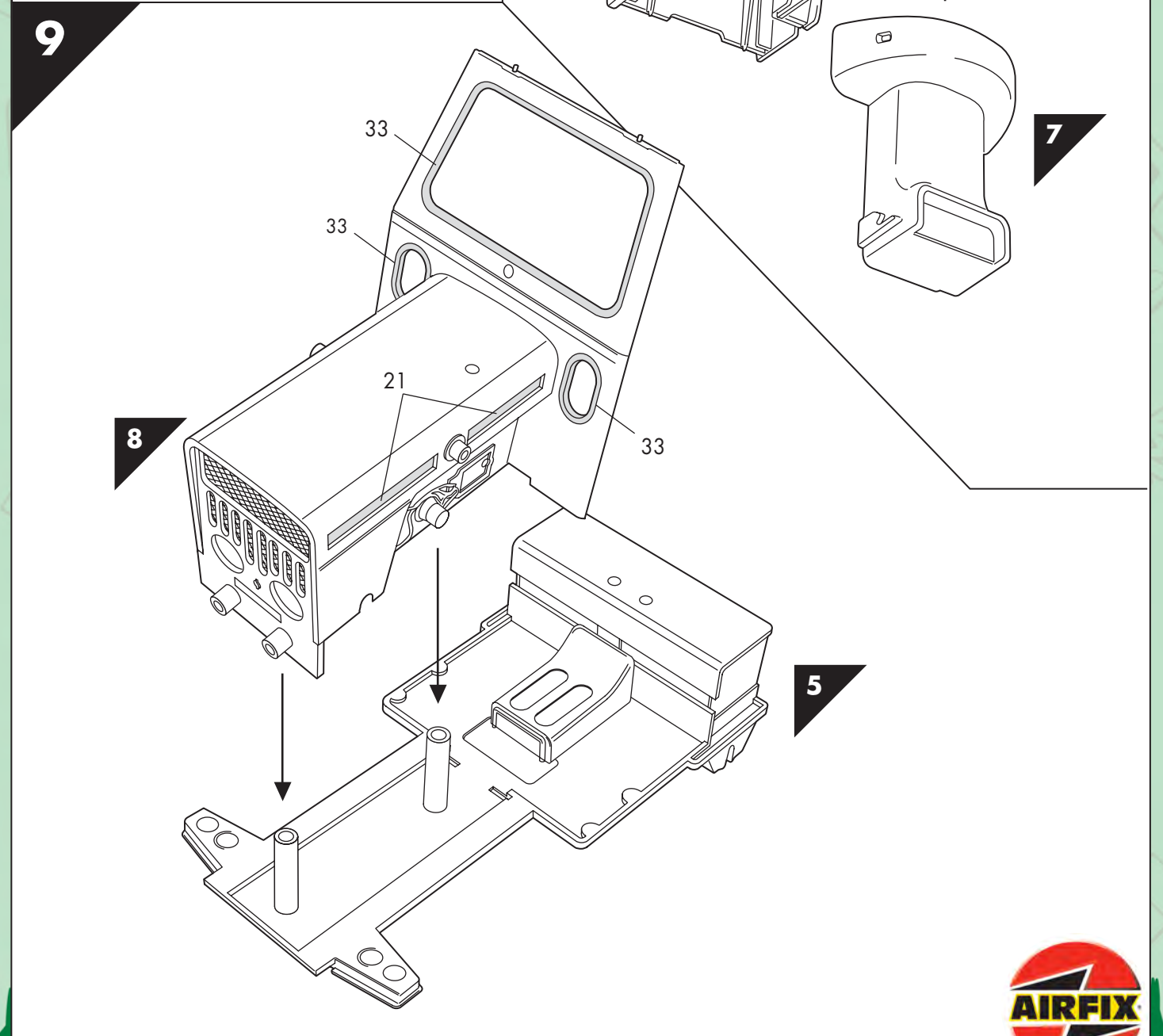
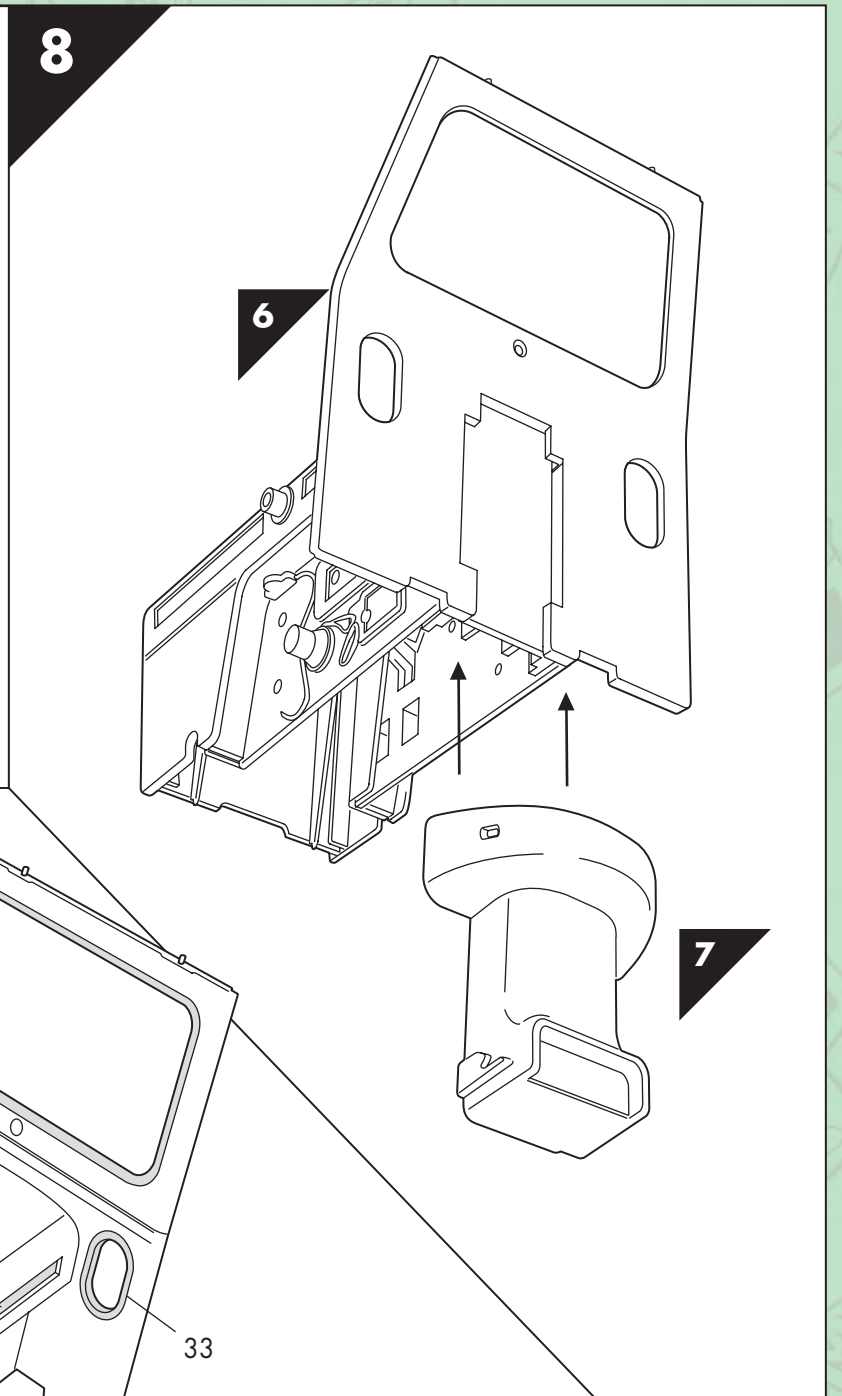
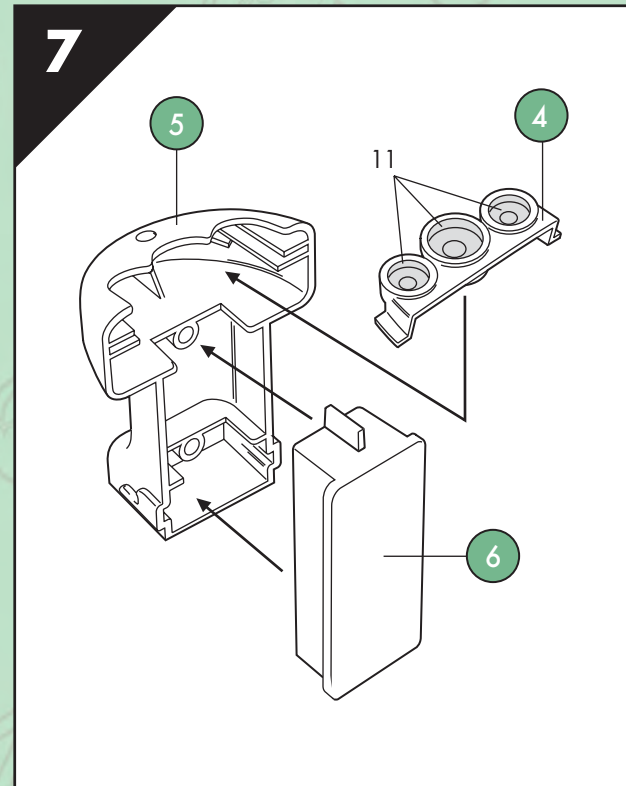
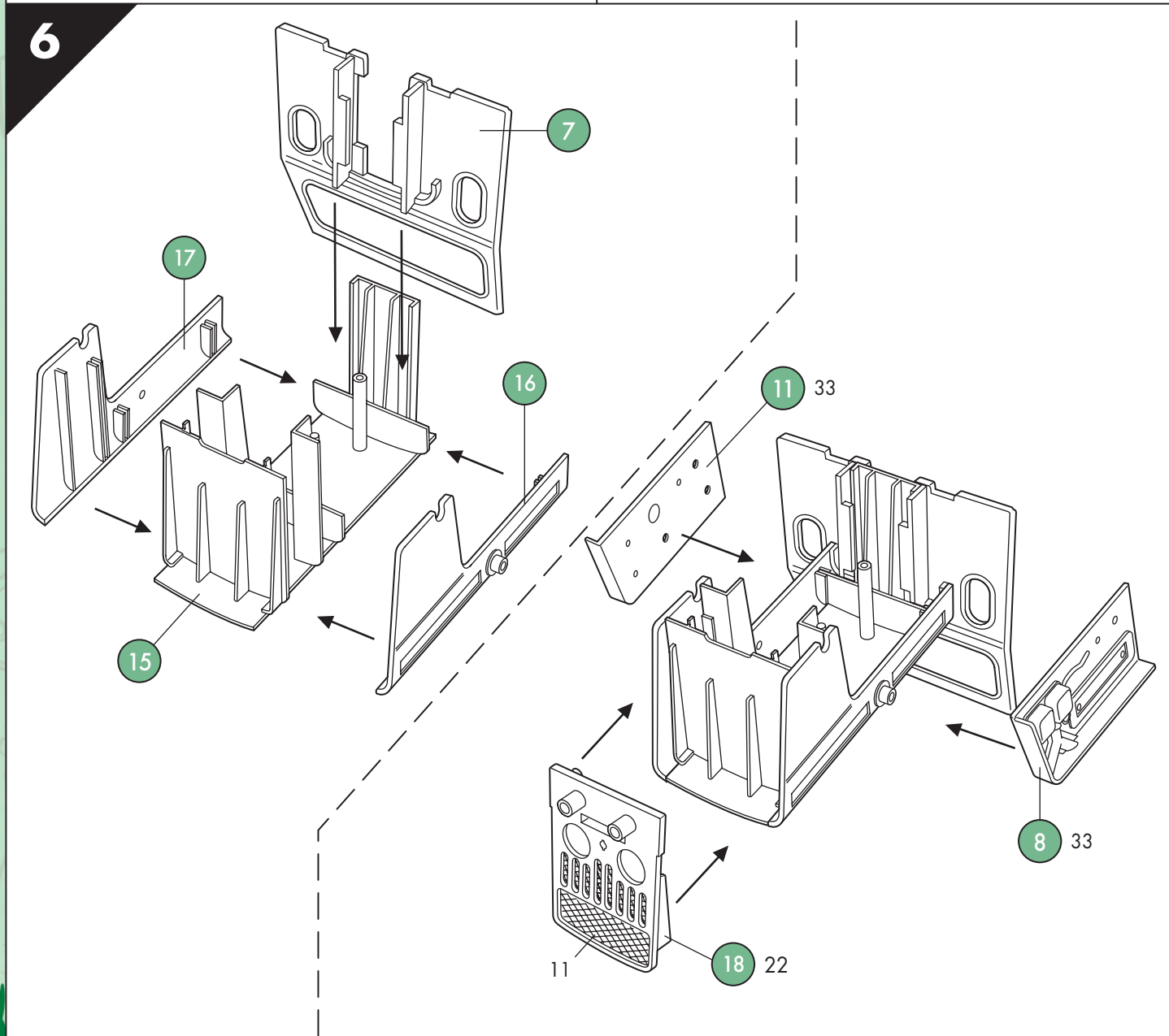
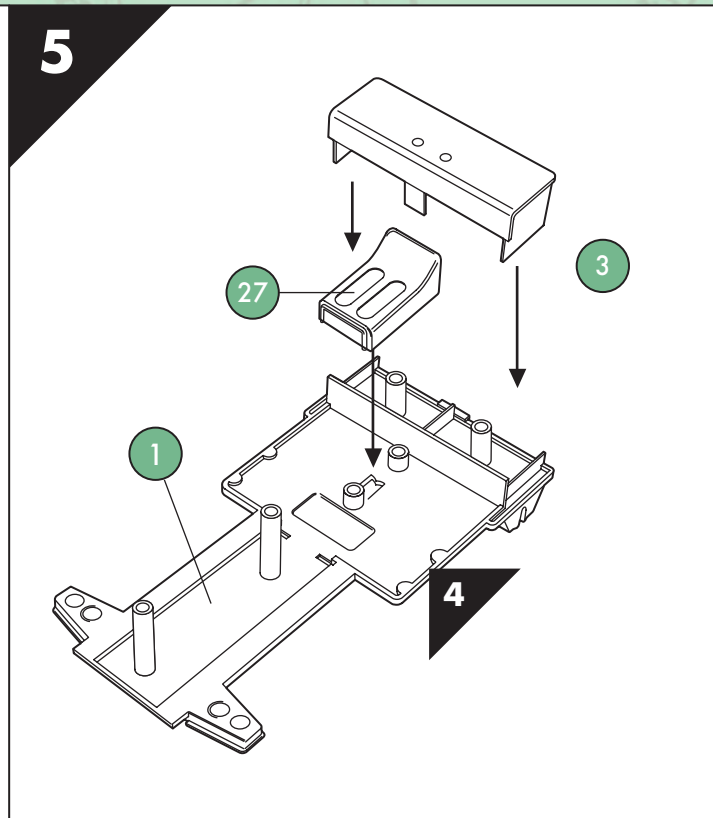
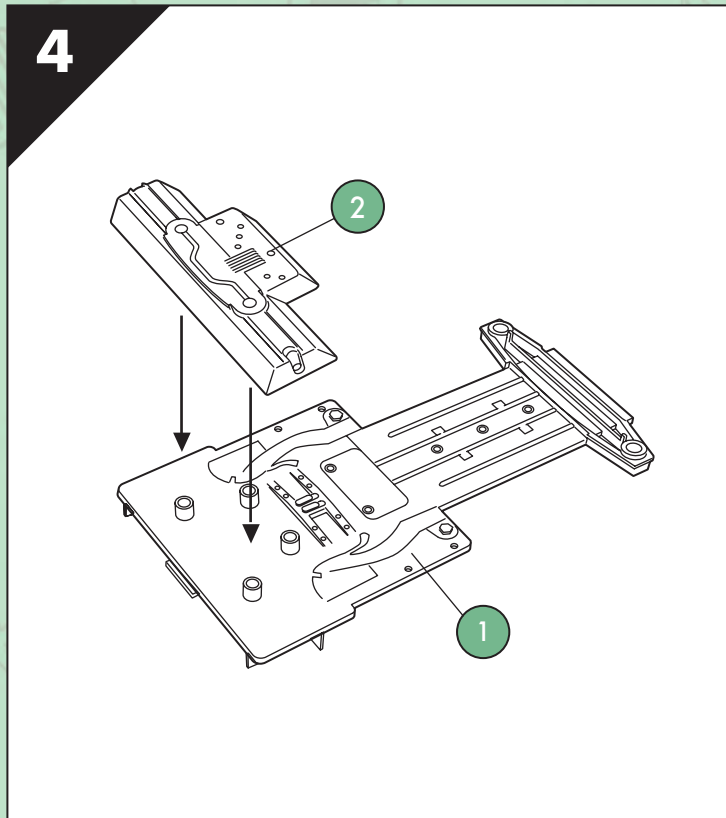
- Assembly phase
- Humbrol cement
- Crystal part
- Metal part
- Do not cement together
- Repeat this operation
- Humbrol paint number

Paints included

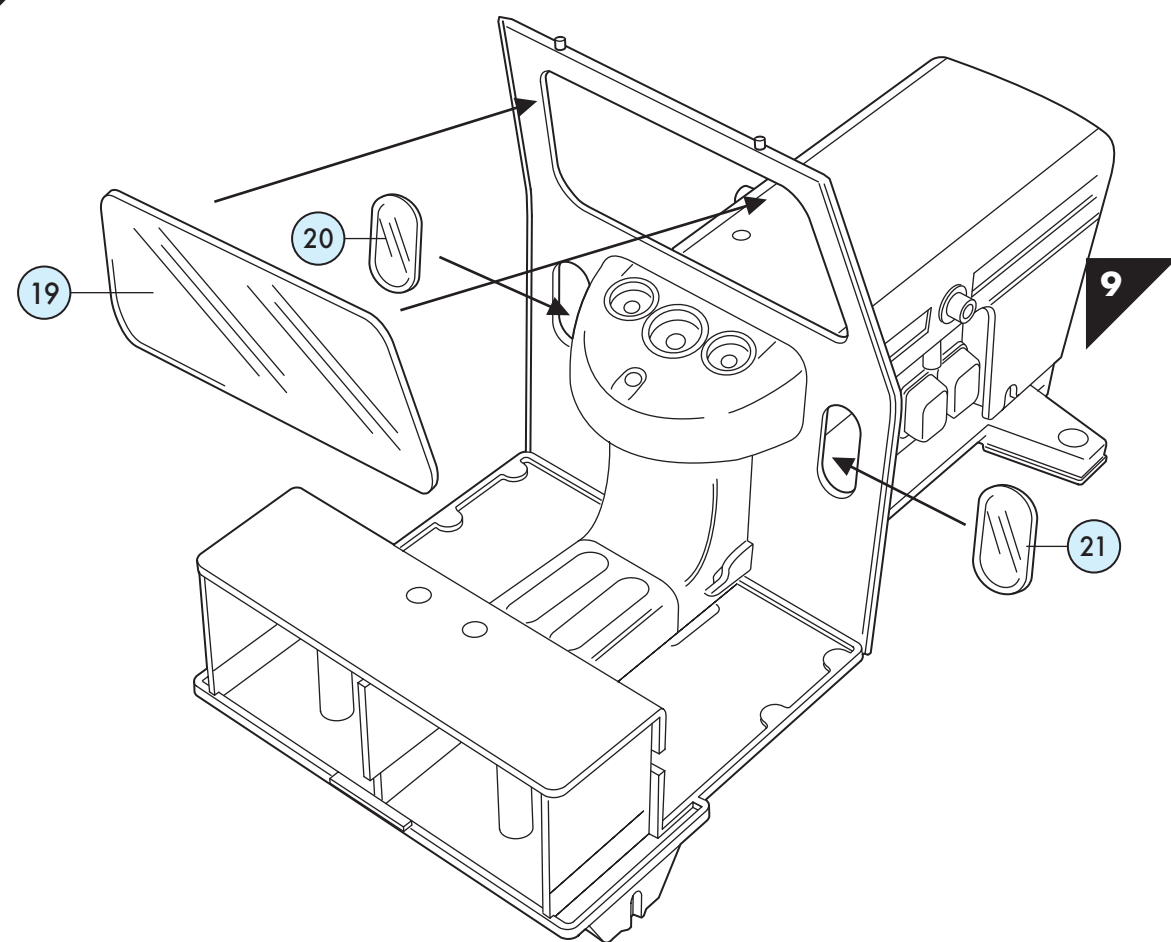
- | | |
|--------------------|-------------------------|
| 11 Silver Metallic | 29 Dark Earth Matt |
| 18 Orange Gloss | 33 Black Matt |
| 19 Red Gloss | 34 White Matt |
| 21 Black Gloss | 41 Ivory Gloss |
| 22 White Gloss | 56 Aluminium Metallic |
| 24 Yellow Matt | 86 Light Olive Matt |
| 25 Blue Matt | 171 Antique Bronze Matt |

Colours are reproduced as accurately as print process will allow. For a colour accurate printed sample refer to the Humbrol Fandek Swatch.

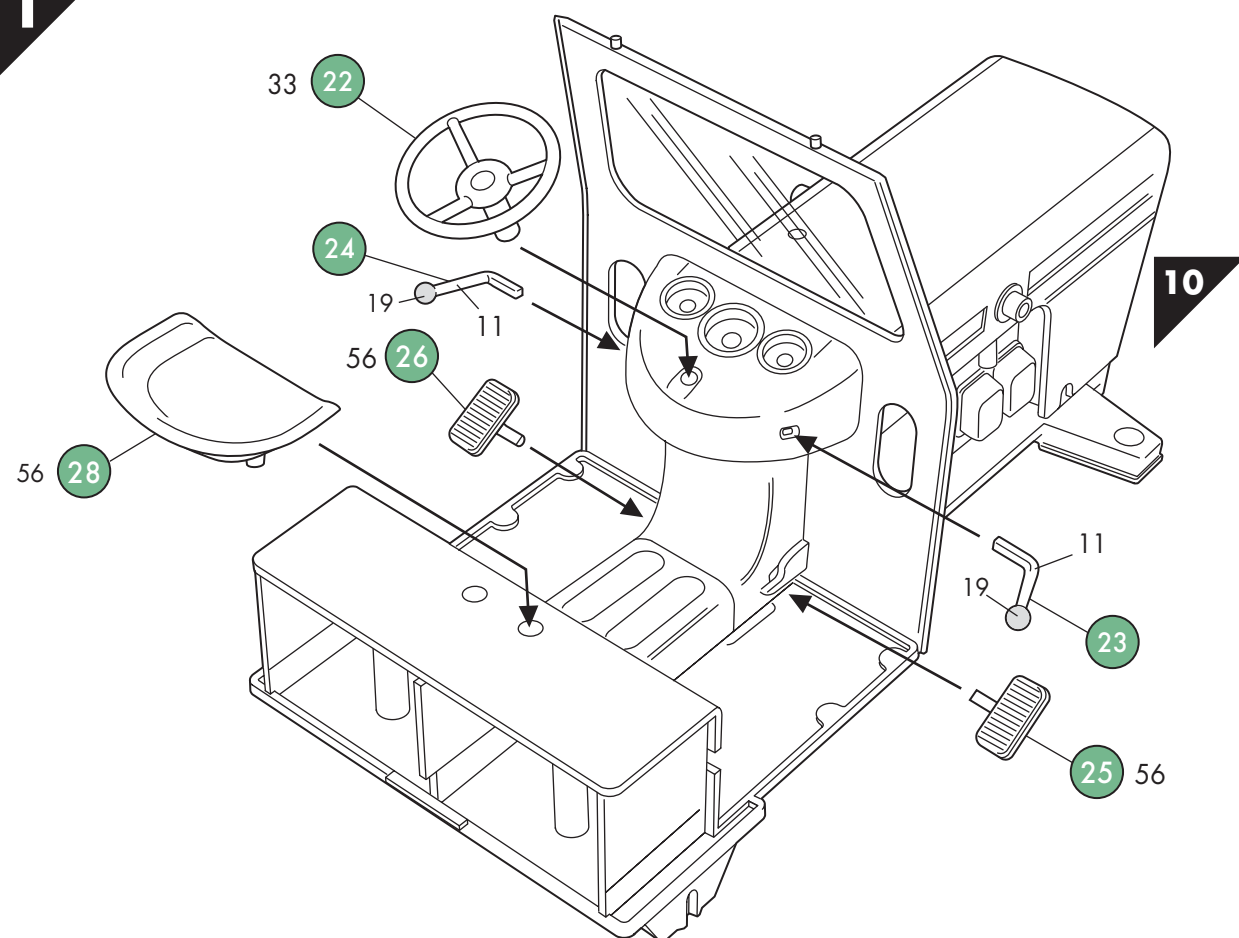




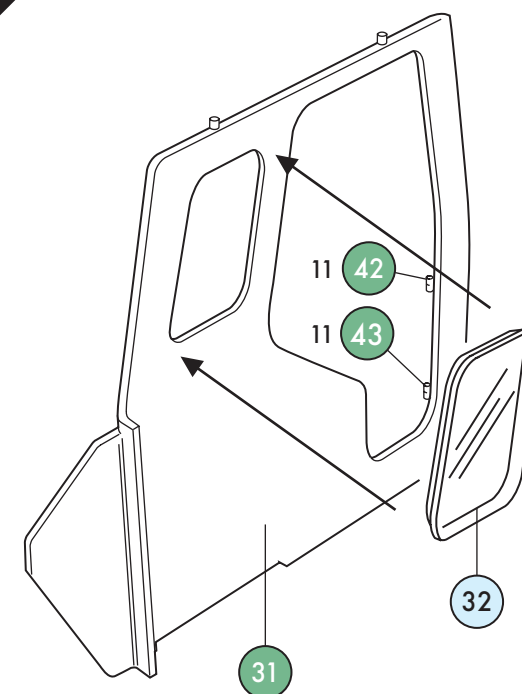
10



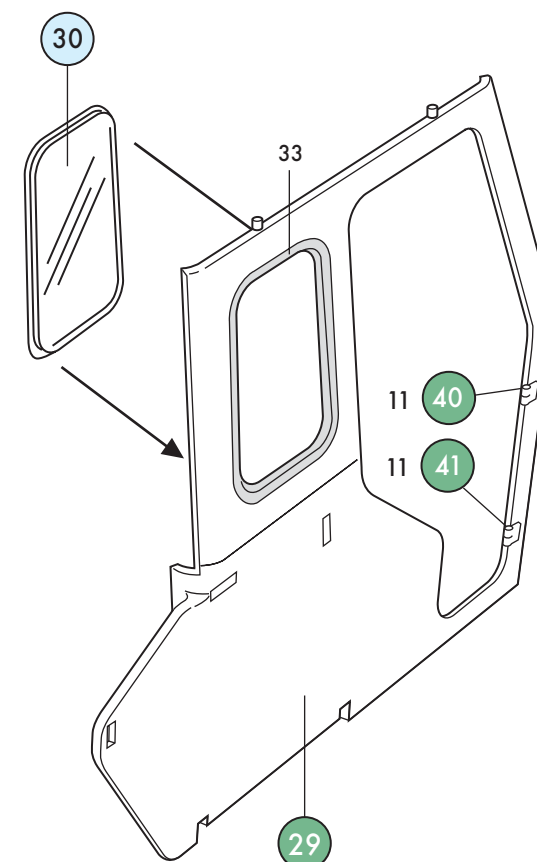
11



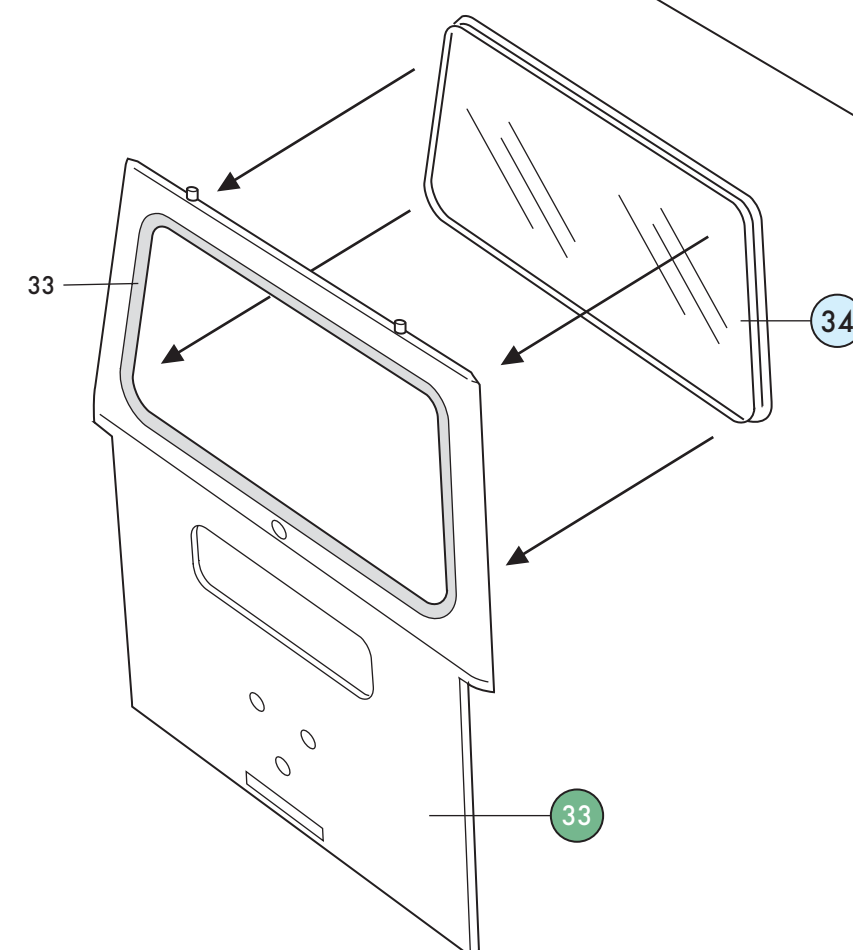
12



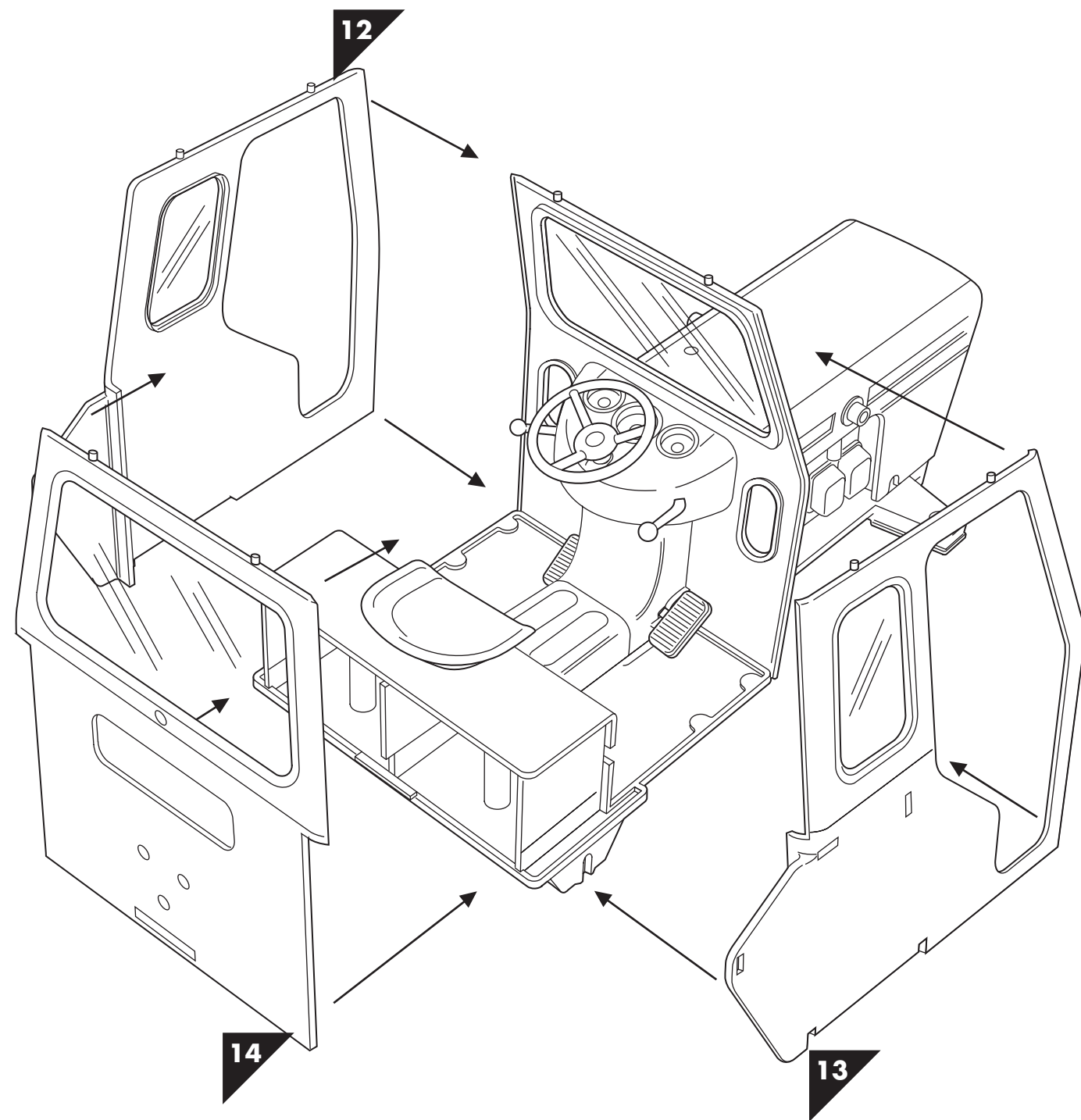
13



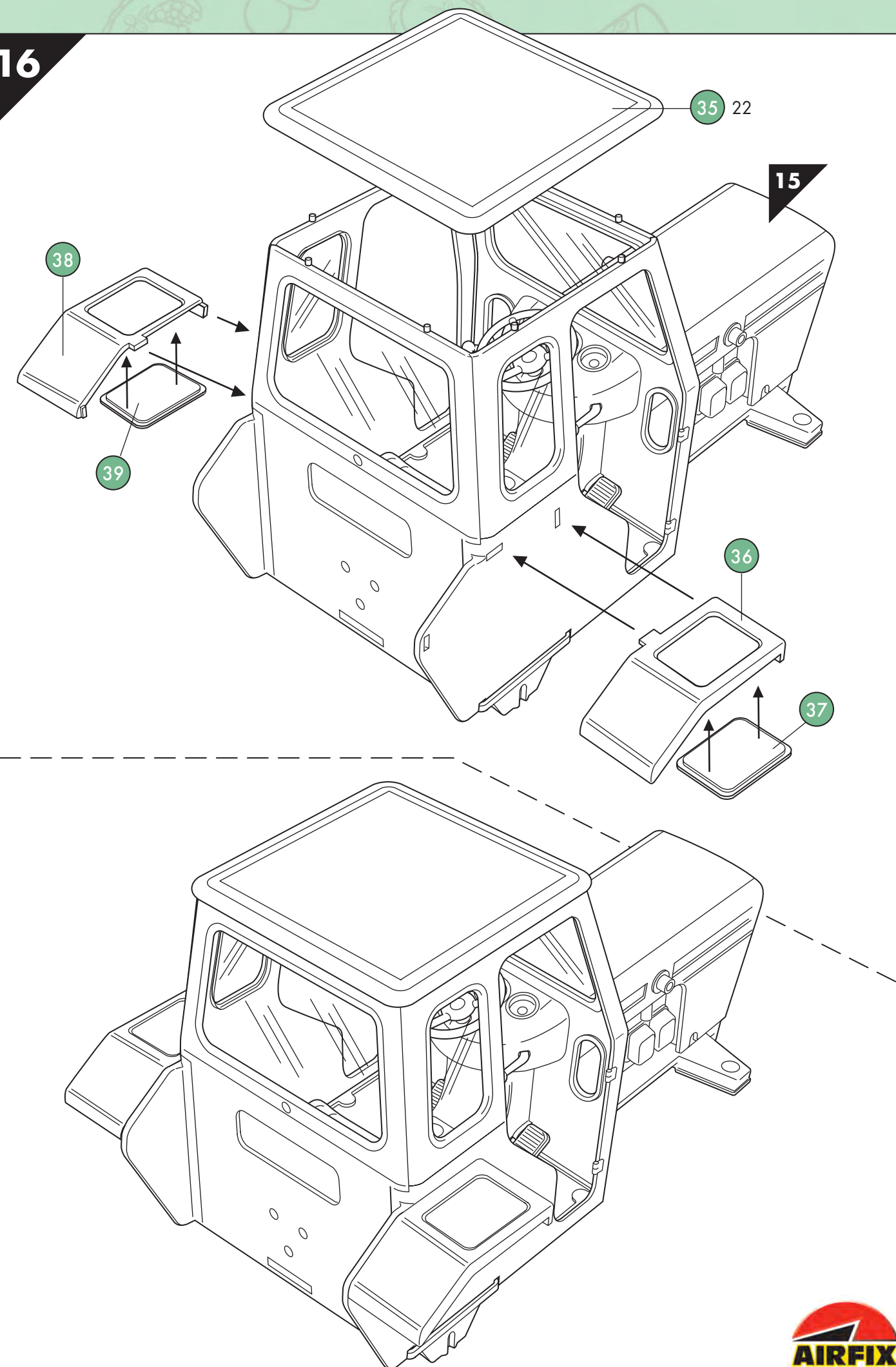
14

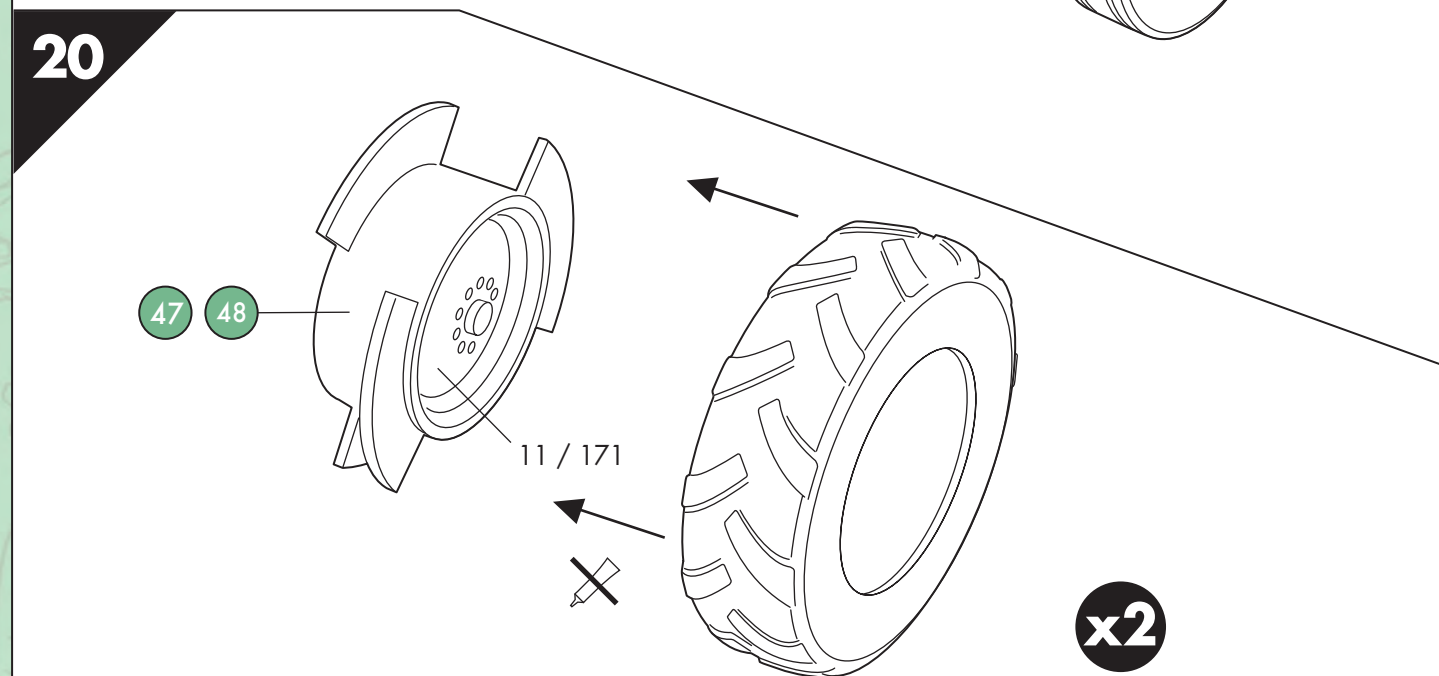


15



16



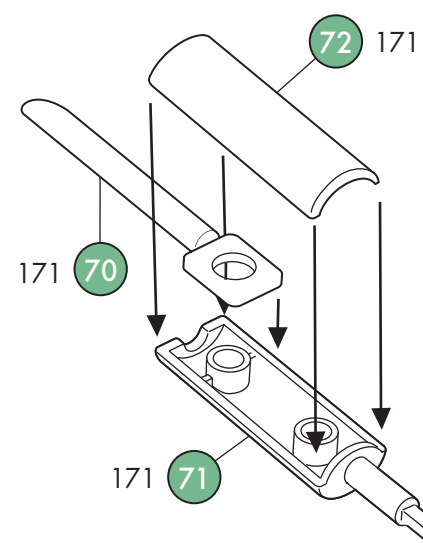


10

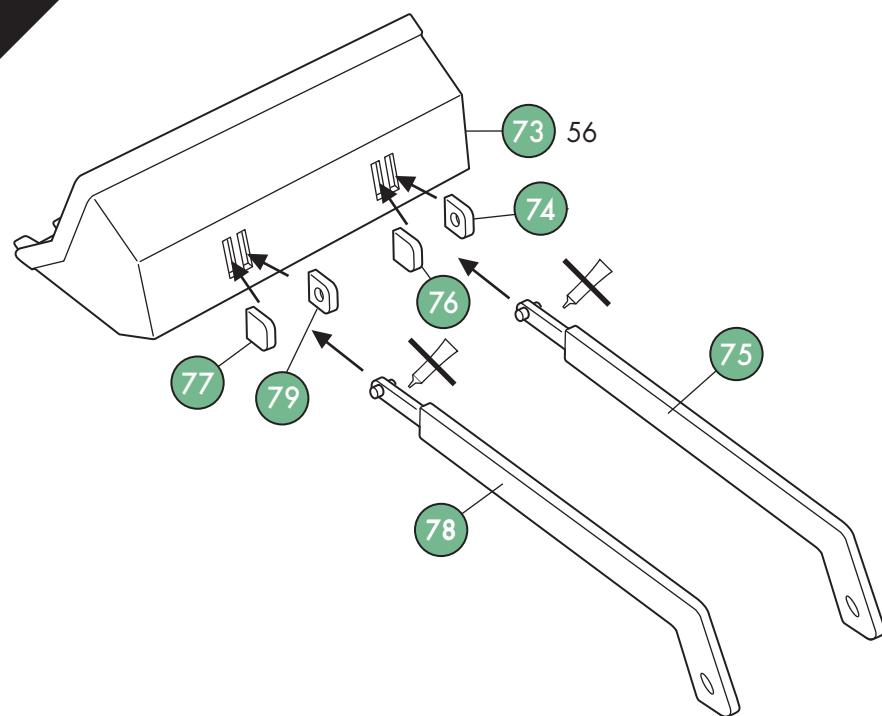


11

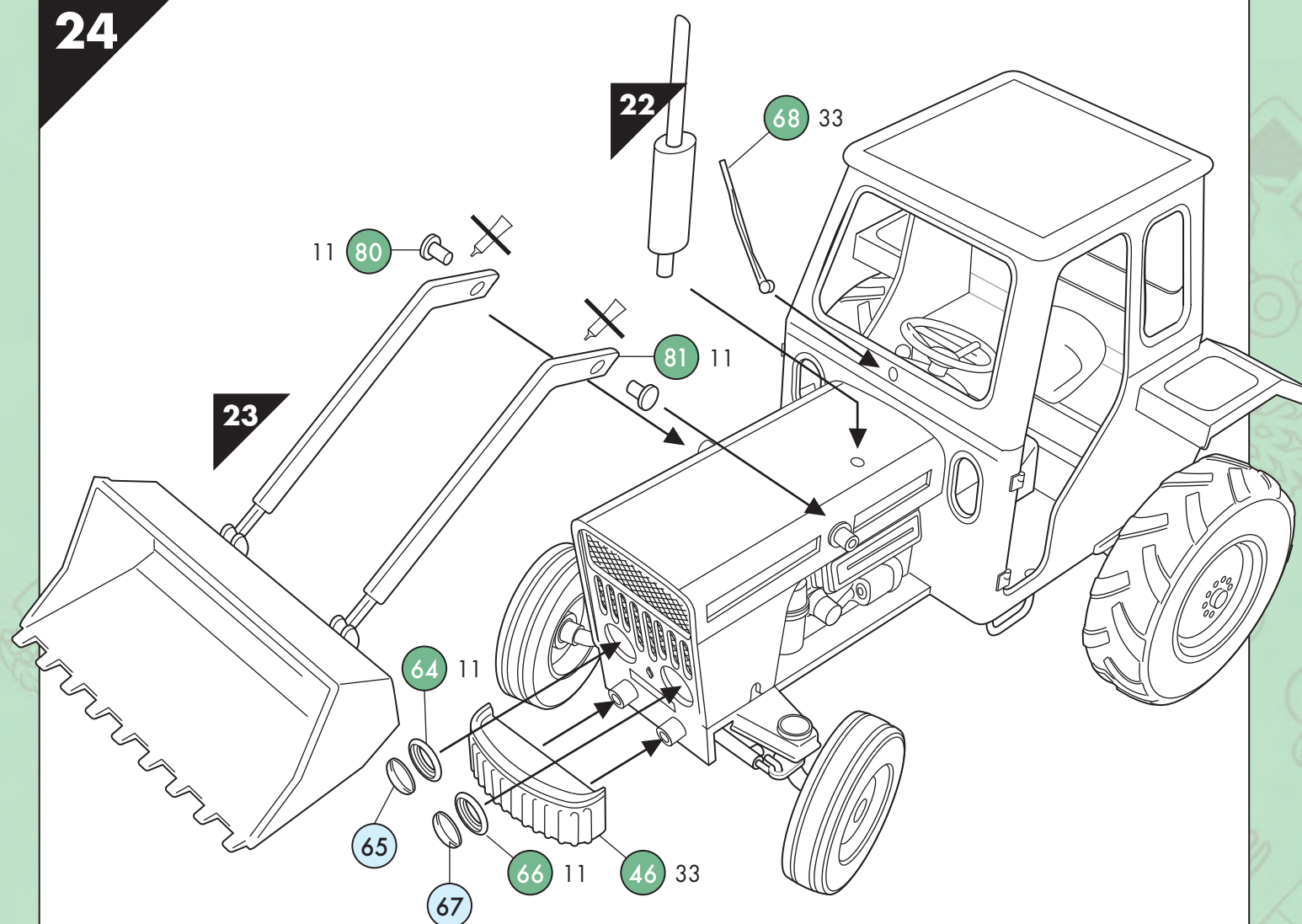
22



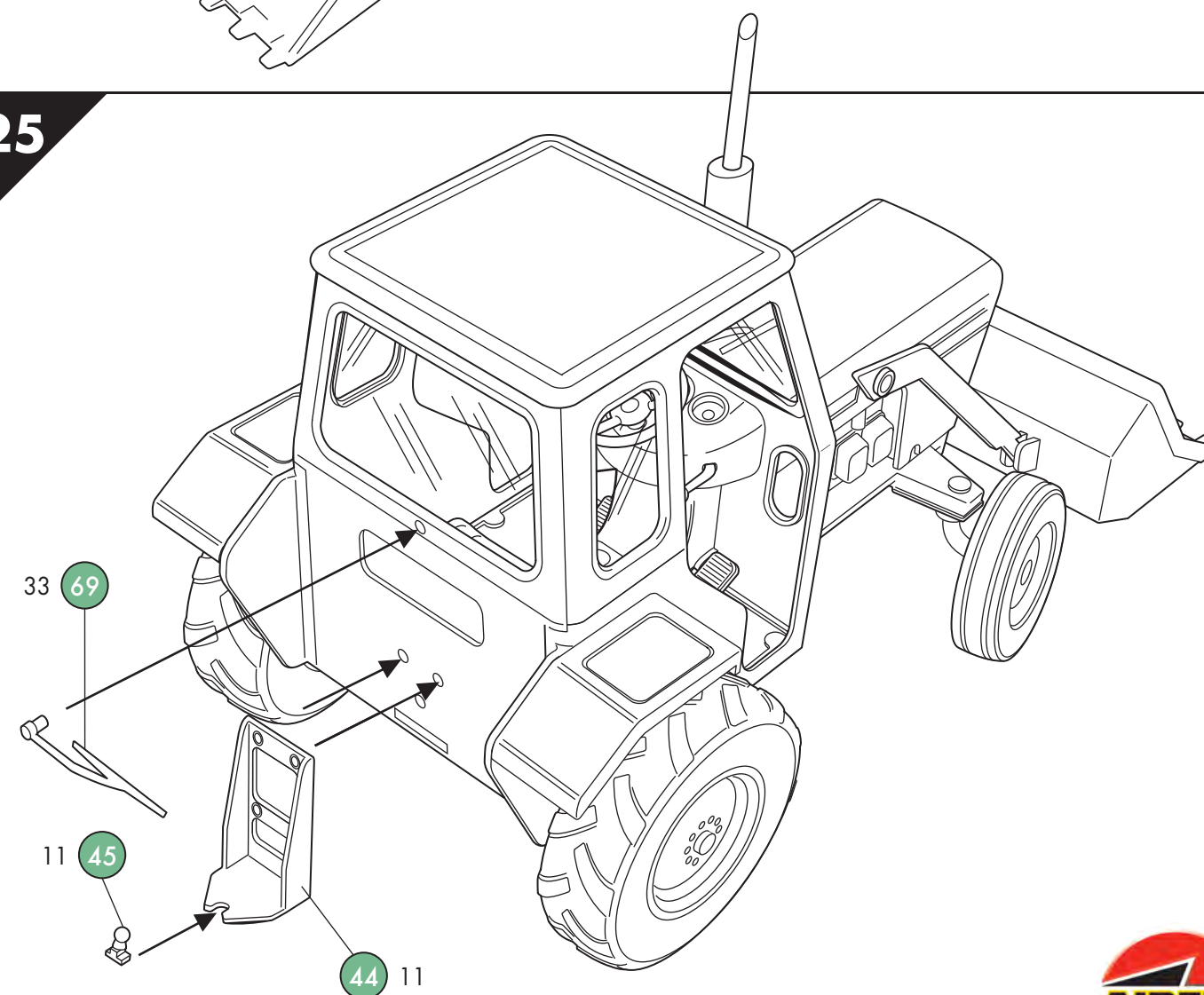
23



24



25



Painting techniques

There are a wide variety of painting techniques that can be employed to enhance your 'Shaun the Sheep Gift Set'. In this painting guide we will firstly outline these techniques and then show you where best to use them.

Equipment

Brushes – You can achieve excellent results with the brushes provided in your model kit.

Water – We recommend two jars of water; a 'clean' jar for cleaning and thinning lighter tones of paint (e.g. Flesh, White and Yellow) and a 'dirty' jar for cleaning darker tones of paint (e.g. Blue, Black and Brown).

Blotter – A pad of Kitchen Towel or Newspaper to brush excess paint on, or to absorb excess water on a freshly cleaned brush.

Paint – Your kit contains all of the colours required to complete your 'Shaun the Sheep Gift Set' and you can if you wish mix certain colours together when 'muddying' the vehicles.

Watercolour Pencils – Coloured pencils that use a special pigment that dissolves in water to produce watercolour paint. By no means essential, Watercolour Pencils can be used to create spectacularly realistic effects on models.

Palette – A surface for mixing paint. You can use commercially available palettes, an old plate, a piece of tinfoil or any non-absorbent material.

Technique Glossary

Brush Loading – Dip the brush in the paint up to about half the length of the bristles. Don't dip the brush in too deeply or you will overload the brush.

Brush Cleaning – Immerse the brush in a jar of water stirring vigorously until the paint on the brush dissolves in the water. Ensure the brush is clean and dry by wiping it on your blotter and checking that the brush does not leave any streaks of the old colour.

Basic Painting – The process of covering the surface of the model with an even coat of paint. Try not to 'overload' the brush with too much paint as this can lead to runs and visible brush marks in addition to destroying fine details on the model. It is always better to apply a few thin coats of paint rather than to apply one thick one. The resulting coat of paint can be referred to as the 'base' or 'foundation' coat.

Due to the nature of the 'Shaun the Sheep' characters, basic painting skills will produce the results you need, but by using some of the following techniques, you can if you wish, produce an authentic looking 'well-used farm vehicle'

Overbrushing – The process of enhancing detail by brushing paint onto the surface of a textured area without filling the recesses. Overbrushing is used on areas of a model such as hair and wood grain. To Overbrush you need to ensure that your brush is not overloaded by wiping away a little paint and ensuring the paint is not too watery. Pull the brush gently over the model with the bristles flat to the surface of the model being careful not to fill the recesses. This technique will work well to 'dirty' up the tyres, and areas around the wheels.

Drybrushing – The process of enhancing detail by brushing high/low lights onto the surface of the models. Drybrushing is used on areas of a model where subtle textures need to be enhanced. It can be used to re-create denim, dirt, metal, hair and many other finishes. To Drybrush you need to load your brush and then repeatedly wipe the brush on your blotter until only a faint mark is produced. Stroke the brush lightly and quickly over the surface of the model building up subtle shades of colour. Again this technique will work well to give a 'dirty' feel on the areas of the vehicle most likely to be muddy.

Washing – The process of enhancing detail by brushing highly viscous (wet) paint over the surface of the model filling detail recesses with paint. Washing is used to

enhance detail by allowing the shading of large areas quickly. Create washes by mixing water and paint in a ratio of six parts of water to four parts of paint. Adding a drop of washing up liquid to the paint will produce a smoother more evenly distributed coat and adding a drop of PVA glue will gather the pigment together creating a stronger contrast. Use this to put 'dirt' into recesses of the vehicle unwashed by the farmer!

Powderbrushing – This is not a technique needed for this model but you may want to know what it is for using on other Airfix models. It is the process of enhancing a model's appearance using the powdered pigment from a Watercolour Pencil. Powderbrushing can enhance the look of clothing but is primarily used to create natural skin tones, stubble and makeup. Powderbrushing is achieved by rubbing the tips of Watercolour pencils on sandpaper (180 Grit is recommended). Carefully create small heaps of powdered pigments which you can blend with a clean brush. Once the correct tone has been achieved brush the model with the pigment using light, quick strokes and 'fix' the end result with a clear lacquer. It is essential that the brush you use for mixing the powders is not in any way damp or the powder will revert to Watercolour paint.



Shaun the Sheep™



© and TM Aardman Animations Ltd 2008. All Rights Reserved.

Shaun the Sheep (word mark) and the character 'Shaun the Sheep' © and TM Aardman Animations Limited.

Vehicle usage courtesy of Ford.

Hornby Hobbies Limited Westwood Margate Kent CT9 4JX UK

Airfix Helpline +44 (0) 1843 233525

Email customercare@hornby.com

www.airfix.com

HORNBY®

A Hornby Product

